



AVK BALL CHECK VALVE, FLANGED, PN10

53/35-003

Ductile iron, DN50-600

AVK ball check valves are self-cleaning and with full bore. The ball rotates during operation eliminating the risk of impurities getting stuck on the ball. The full and smooth bore ensures full flow with low pressure loss and eliminates the risk of deposits at the bottom. AVK ball check valves are available with flanges and internal threads. They are delivered with NBR lined ball as standard and optionally with ball of polyurethane available in different weights.

Product description:

Ball check valve with flanges for wastewater treatment and neutral liquids to max. 70° C

Standards:

- Designed according to EN 12050-4
- Face-to-face dimension according to EN 558 Table 2 Basic Series 48
- Standard flange drilling to EN1092-2 (ISO 7005-2), PN10/16

Test/Approvals:

- Hydraulic test according to EN12050-4.
- Approved according to 60143502, TÜV-Mark

Features:

- Self-cleaning construction, where the ball rotates during operation eliminating the risk of impurities getting stuck on the ball
- Full bore ensures low pressure loss and minimum back pressure
- Smooth bore eliminates the risk of deposits at the bottom
- NBR lined ball of steel in DN50 up to DN100, ductile iron from DN125 up to DN400 and cast aluminum in DN500. In DN600 the ball is of cast aluminum with PUR liner. The rubber hardness is optimised to prevent the ball from getting stuck in the seat.
- The ball is optionally available in polyurethane suitable for abrasive media and if different ball weights are necessary to prevent vibration and water hammer
- Compact design and low weight
- Bolts and nuts of stainless steel and body and cover of ductile iron with epoxy coating internally and externally according to AVK coating standard



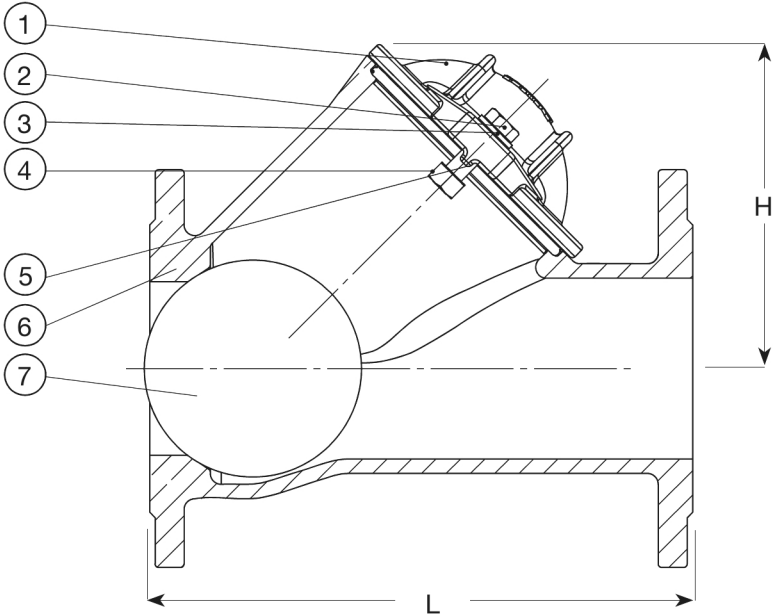
Expect... **AVK**

The designs, materials and specifications shown are subject to change without notice. This is due to the continuous development of our product programme.

AVK BALL CHECK VALVE, FLANGED, PN10

53/35-003

Ductile iron, DN50-600



Component list:

| | | | |
|-----------|--|-----------|---------------------------------|
| 1. Cover | Ductile iron GJS-500-7 | 5. O-ring | NBR rubber |
| 2. Bolt | Stainless steel A2 | 6. Body | Ductile iron GJS-500-7 |
| 3. Washer | Stainless steel A2 | 7. Ball | NBR rubber line on a metal core |
| 4. Nut | Stainless steel, A4 acid resistance, w. delta seal | | |

Components may be substituted with equivalent or higher class materials without prior notification.

Reference nos. and dimensions:

| AVK ref. no. | DN mm | Product PN Class | Flange drilling | L mm | H mm | Theoretical weight/kg |
|-------------------------------|----------|---------------------|--------------------|---------|---------|--------------------------|
| 53-050-35-1007 | 50 | PN10 | PN10/16 | 200 | 101 | 7.5 |
| 53-065-35-1007 | 65 | PN10 | PN10/16 | 240 | 148 | 10 |
| 53-080-35-1007 | 80 | PN10 | PN10/16 | 260 | 148 | 12 |
| 53-100-35-1007 | 100 | PN10 | PN10/16 | 300 | 182 | 16 |
| 53-125-35-1007 | 125 | PN10 | PN10/16 | 350 | 251 | 35 |
| 53-150-35-1007 | 150 | PN10 | PN10/16 | 400 | 251 | 32 |
| 53-200-35-0007 | 200 | PN10 | PN10 | 500 | 333 | 68 |
| 53-200-35-1007 | 200 | PN10 | PN16 | 500 | 333 | 68 |
| 53-250-35-0007 | 250 | PN10 | PN10 | 600 | 406 | 93 |
| 53-250-35-1007 | 250 | PN10 | PN16 | 600 | 406 | 93 |
| 53-300-35-0007 | 300 | PN10 | PN10 | 700 | 480 | 124 |
| 53-300-35-1007 | 300 | PN10 | PN16 | 700 | 480 | 124 |
| 53-350-35-0007 | 350 | PN10 | PN10 | 800 | 571 | 231 |
| 53-350-35-1007 | 350 | PN10 | PN16 | 800 | 571 | 231 |
| 53-400-35-0007 | 400 | PN10 | PN10 | 900 | 657 | 416 |
| 53-400-35-1007 | 400 | PN10 | PN16 | 900 | 657 | 416 |
| 53-500-35-0007 ⁽¹⁾ | 500 | PN10 | PN10 | 1100 | 930 | 712 |
| 53-600-35-0207 ⁽²⁾ | 600 | PN10 | PN10 | 1300 | 1010 | 1200 |

(1) Approximate TÜV test

(2) Approximate TÜV test. Supplied with PUR lined ball as standard

The designs, materials and specifications shown are subject to change without notice. This is due to the continuous development of our product programme.

