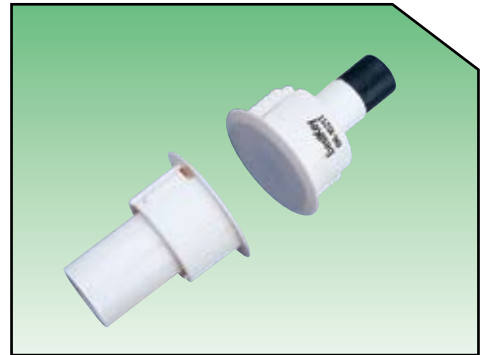


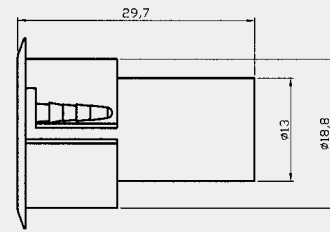
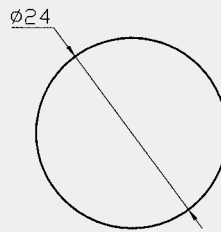
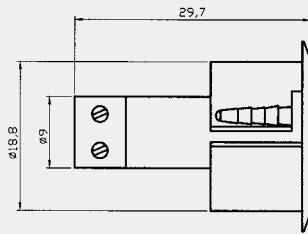
Specification: **BR-1021T**

- \* 3/4" diameter press to fit
- \* Suitable for steel door install
- \* Self-locking
- \* Swith and Magnet available seperately
- \* Resistor or Diode available on request
- \* Colors: White, Brown, Grey

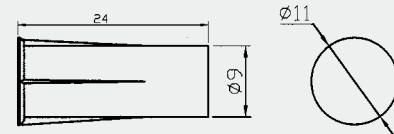
... Recessed Mounted



Dimension (mm):



Alternate Magnets:



M3710C for BR-1021TMM

Order Information:

Part Number	Loop Type	Reed Form	Closed Gap (in steel door) [Inch(mm)]	Depature Gap (in steel door) [Inch(mm)]	Maximum Initial Contact Resistance (Ohm)	Maximum Contact Rating (W)	Maximum Switching Voltage (VDC/VAC)	Maximum Switching Current (A)
BR-1021T	Closed	N/O	1/2+ (15)	0.6 (17)	0.150	7.5	100	0.4
BR-1021TMM	Closed	N/O	1 (23) (in wood)	0.95(24)	0.150	7.5	100	0.4
BR-1021TWG	Closed	N/O	3/4 (19)		0.150	7.5	100	0.4
BR-1021TA	Open	N/C	1/2 (13)		0.150	3	30	0.2

Note: 1. Gap will increase substantially for installations other than steel

2.Wire range for terminals: #20~#24AWG