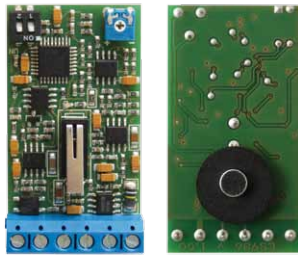


GLASS BREAK DETECTOR

GS1

CONFORM TO EN 50131

10 YEARS
warranty



Technical Features

	GS1
POWER SUPPLY	13.8 Vdc
CONSUMPTION	15 mA
RANGE MICROPHONE	8 mt
ALARM TIME	2"
ANTIOPENING TAMPER	YES
RFI PROTECTION	30 V/m
DIGITAL ANALYSIS	YES
HOUSING	ABS
OPERATING TEMPERATURE	from -10°C to +40°C
DIMENSIONS	37 x 78 x 21 mm

GS1 is a microphone glass break detector. It is equipped with filters that allow to determinate different types of glass breakage. It has a range of about 8 meters, and can be installed in any position without compromising efficiency.

Available colours: white, dark brown

SEISMIC DETECTOR

SS14

DIGITAL DETECTOR WITH ACCELEROMETER TECHNOLOGY

10 YEARS
warranty



Technical Features

	SS14
POWER SUPPLY	13.8 Vdc
CONSUMPTION	23 mA
ALARM TIME	2"
ANTIOPENING TAMPER	YES
RFI PROTECTION	30 V/m
DIGITAL ANALYSIS	YES
HOUSING	ABS
OPERATING TEMPERATURE	from -10°C to +40°C
DIMENSIONS	37 x 78 x 21 mm

SS14 is a vibration/inertial detector designed for the protection of windows, cabinets, fixtures, and so on. It has a high-precision vibration sensor, which allows to determine the type of shock and/or vibration caused by an attempt to break through or forcing a frame. It is not necessary to use pulse analysis boards since everything is processed within the sensor itself. It is equipped with 2 channels, contact REED and INERTIAL / FLIP.

Available colours: white, dark brown